

ProjectWise Resource List Installation

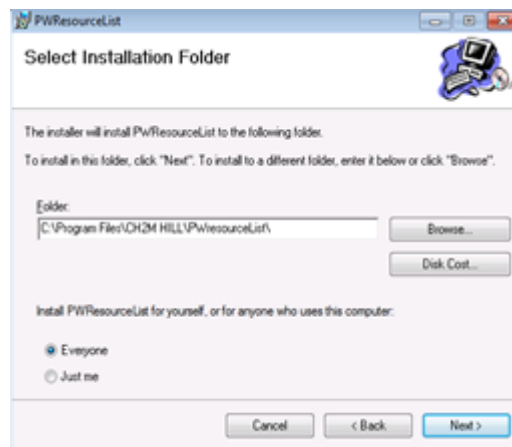
Overview

ProjectWise Resource Manager is used to manage the standards and resources required for a project. Resource Manager will automatically update your ProjectWise working environment to ensure you are always working with the most up to date standards required by your project.

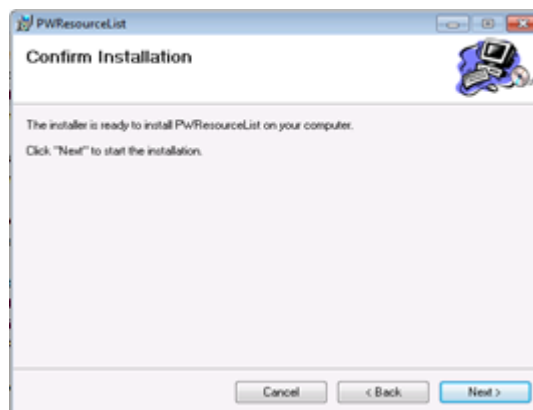
Installation

Execute the ProjectWise Resource List package downloaded from the ProjectWise Website.

- Click **Next** on the setup wizard to begin Installation
- Leave the folder path as the default and ensure **Everyone** is selected



- Click Next to begin Installation



- When Installation is complete, click **Close** (see page 2 for files installed by Resource List)

Files installed by Resource List:

PRM installs the following files to **C:\Program Files\Bentley\ProjectWise\Bin** on 32 bit machines and **C:\Program Files (x86)\Bentley\ProjectWise\Bin** on 64 bit machines.

- PWRResourceList.dll – ProjectWise Custom module to perform actions needed for the ResourceList logic
- PWDIExtWithCOM.dll – ProjectWise Custom module to communicate between ProjectWise and Custom Modules
- ch2m_hooks.dll – ProjectWise Custom module for hooking to ProjectWise Events
- ch2m_ResourceList_Instructions.mrr – ProjectWise Custom Menu definition for reading project Instructions
- RegManConsole.exe – Custom module used for Registry updates for the Standard Dashboard

The following files are all used for checking compressed files in ProjectWise and expanding them to the local computer as needed. They are installed to the same location.

- SevenZipSharp.dll
- Ionic.Zip.Reduced.dll
- CrossoverLib.dll
- CabLib.dll
- 7z.dll