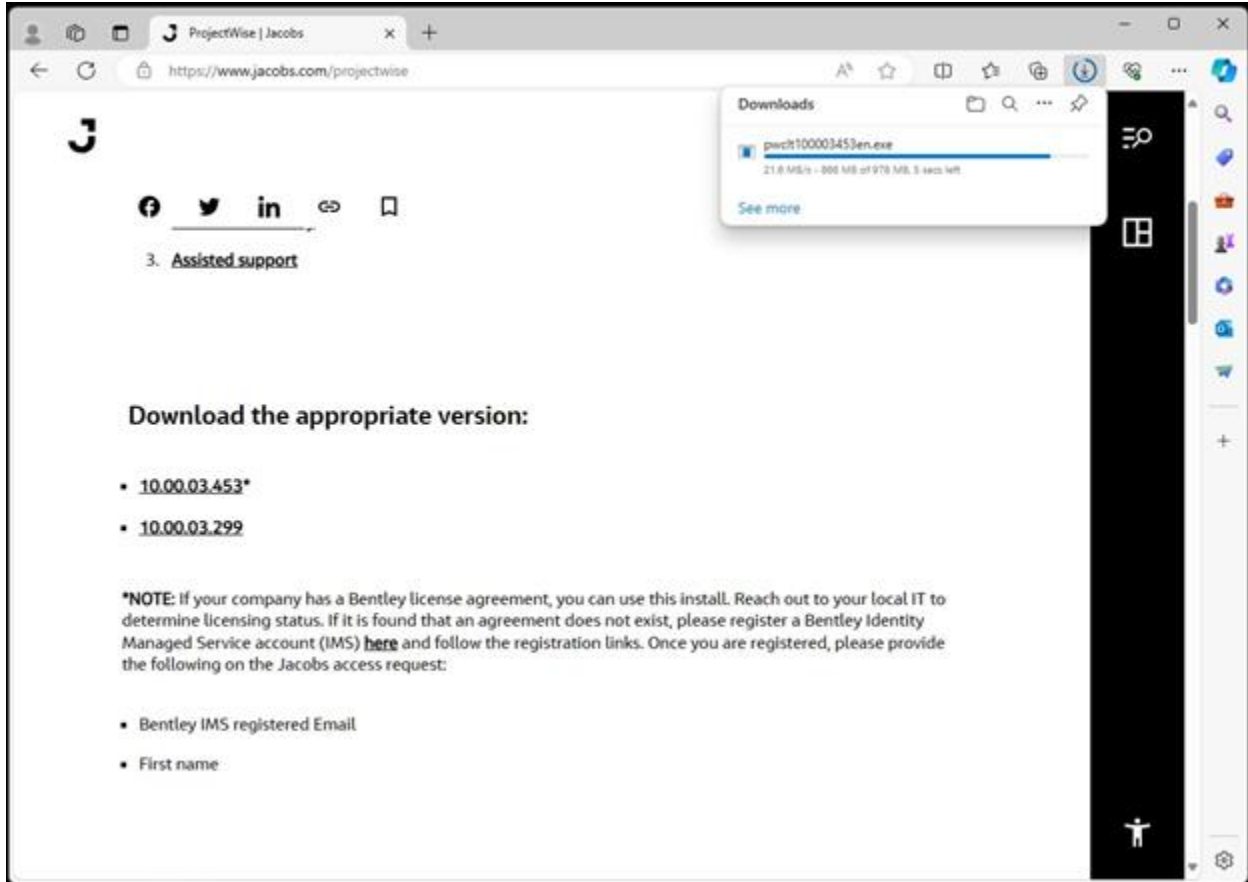
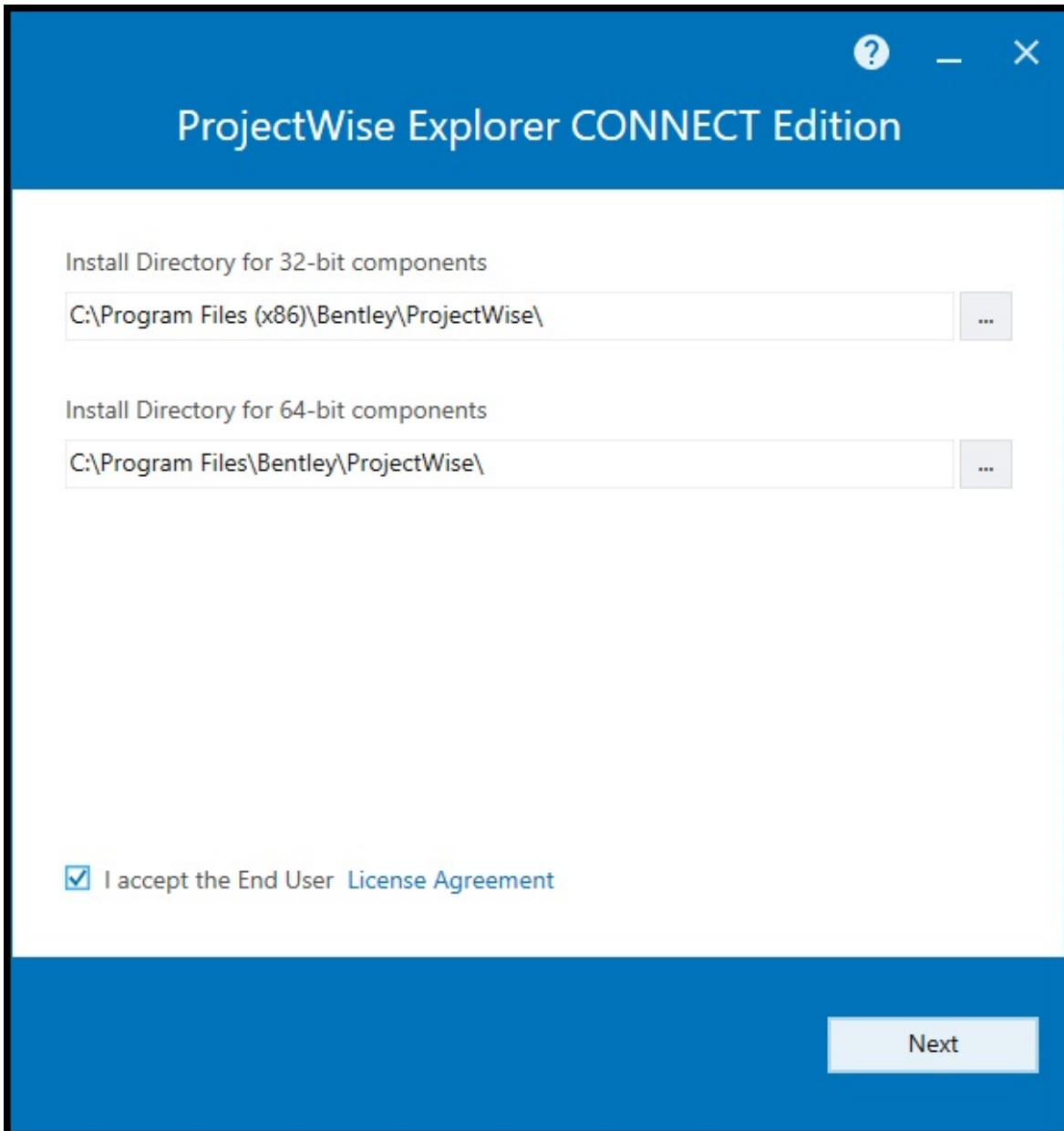


# ProjectWise Explorer installation

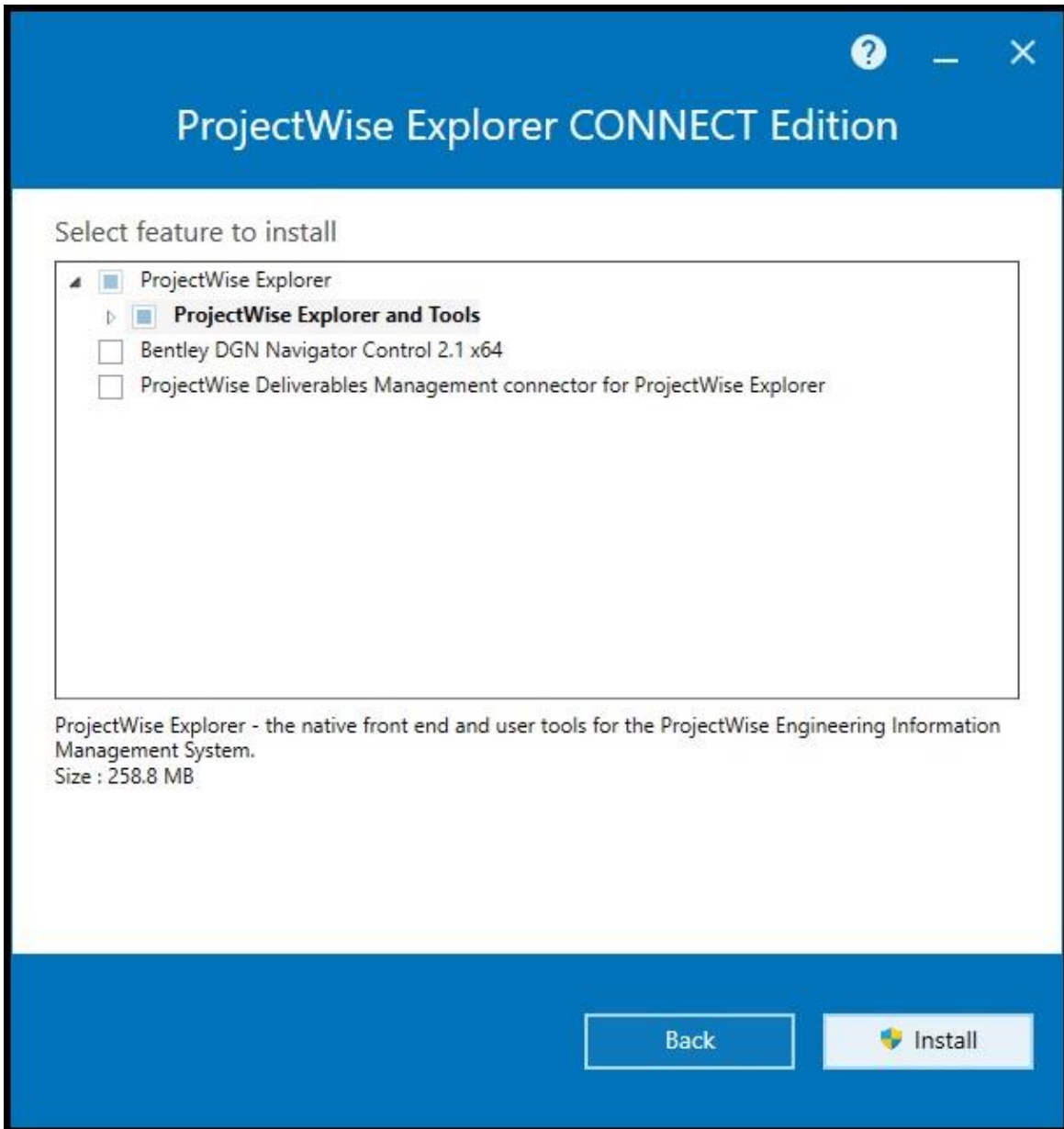
- Select and download the appropriate version.



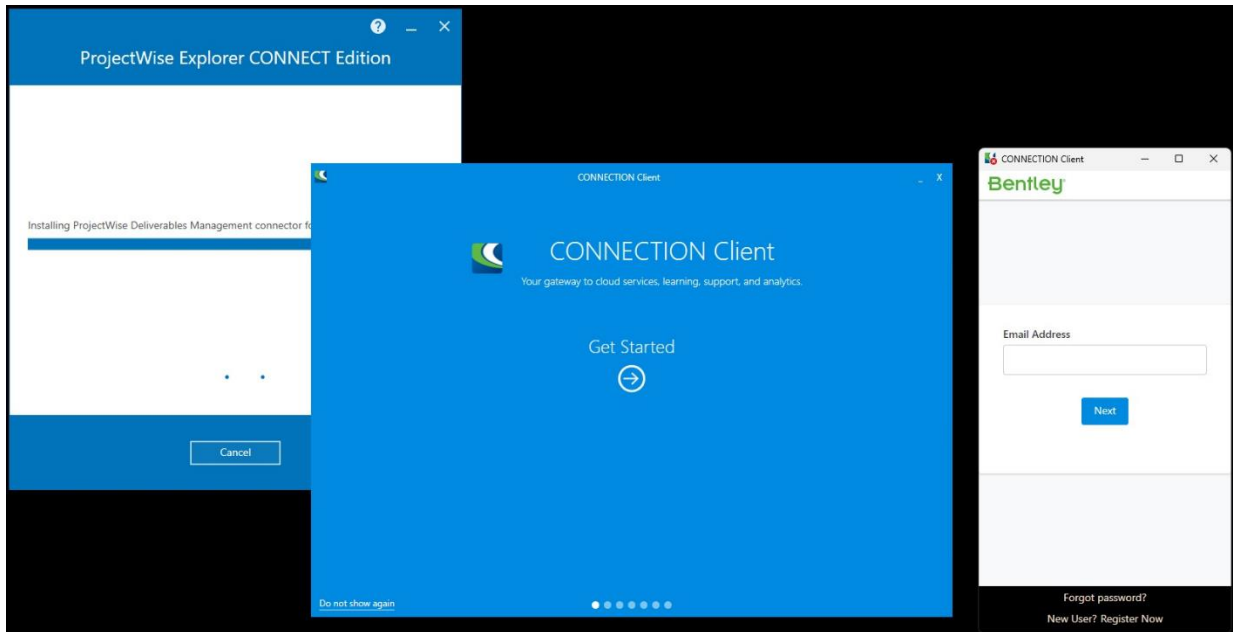
- Navigate to the downloaded file and execute the install file. This may require local IT assistance if there are workstation restrictions within your company.
- Accept the license agreement and select **NEXT**.



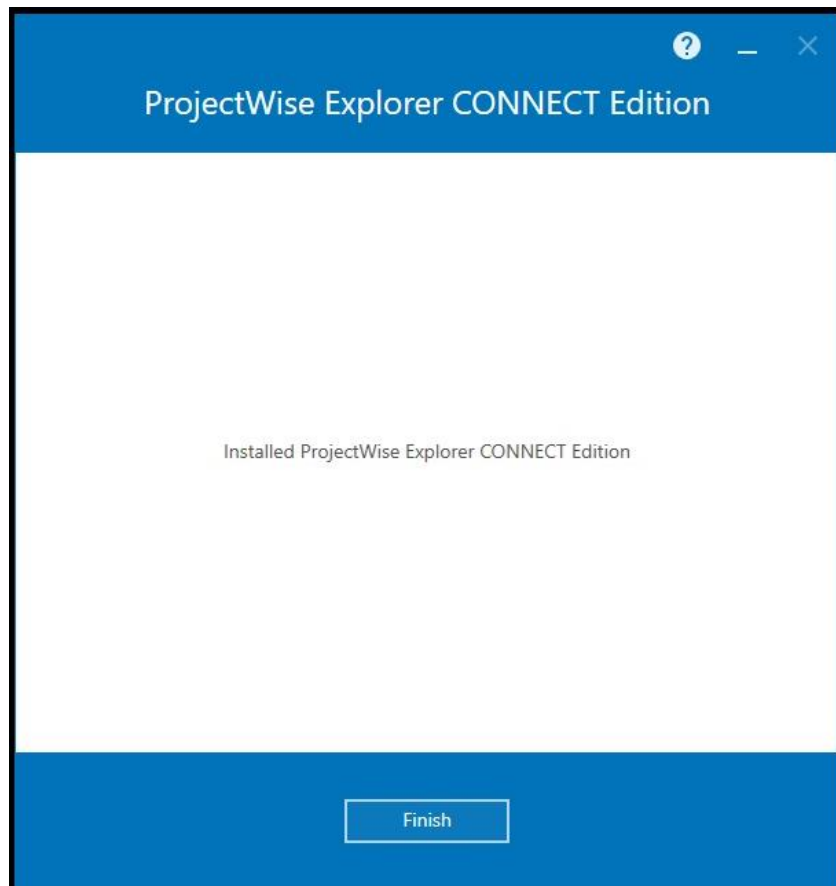
- Expand to select the features you need to install. Then select **INSTALL**.



- Depending on your workstation UAC (User Access Control) settings, you may get prompted asking Projectwise Explorer Connect Edition to make changes to your device. Select **YES**.

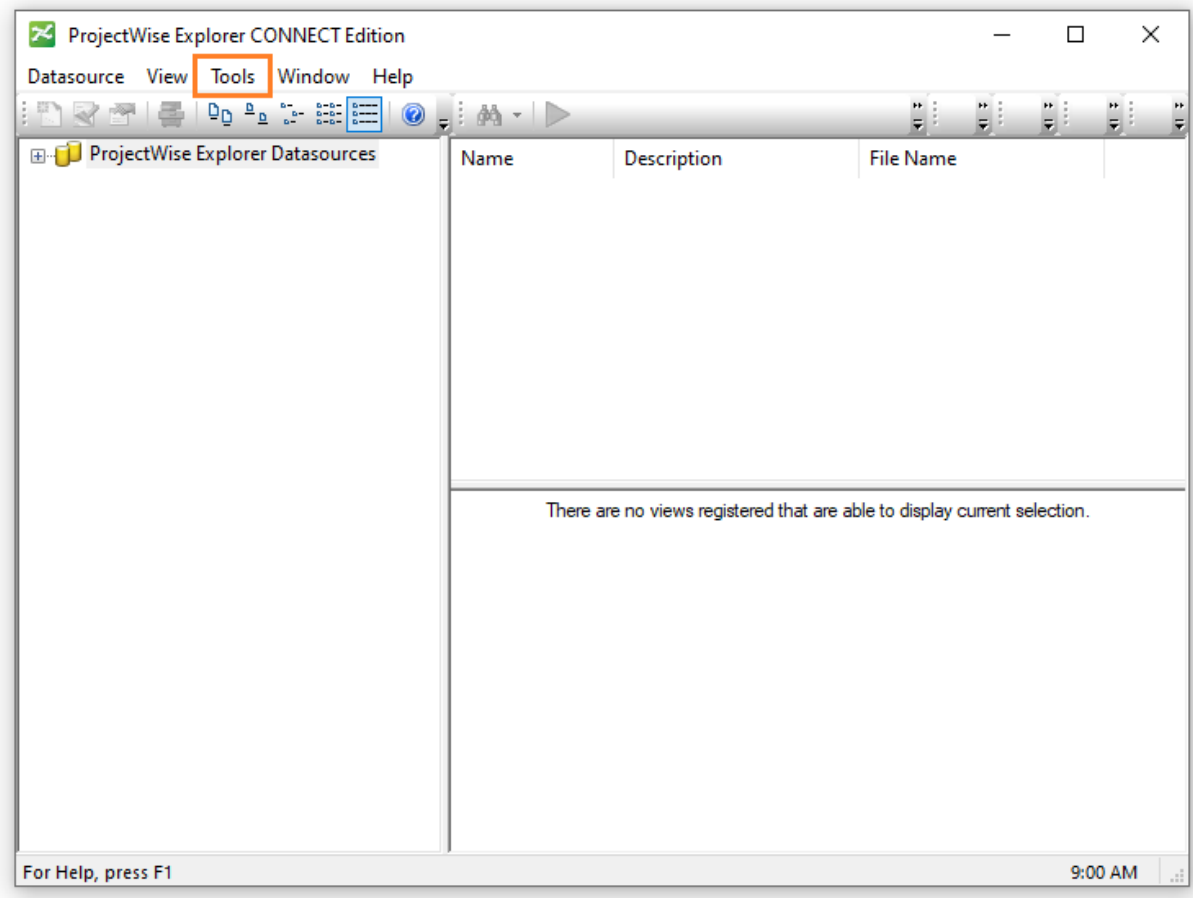


- Log into Connection Client using your email address and follow the registration process if needed.
- Select **FINISH** to complete the installation.

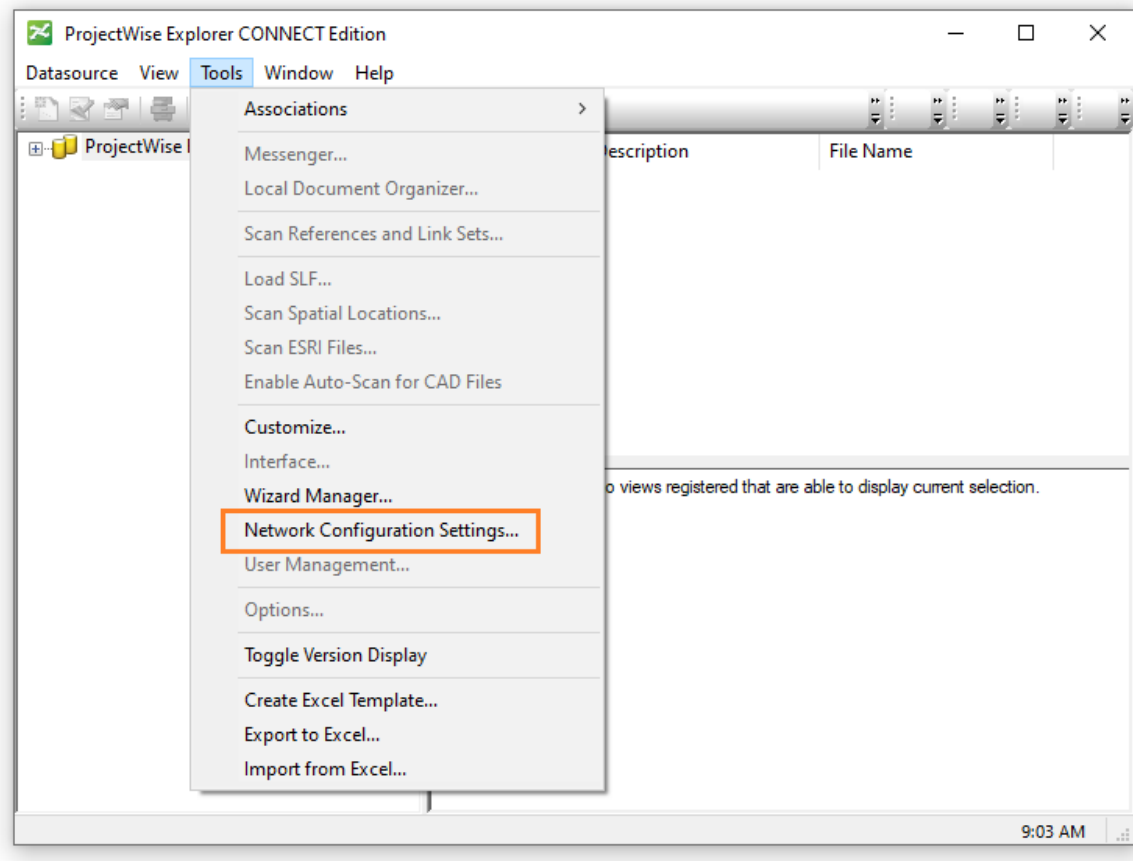


# ProjectWise Network Settings Configuration

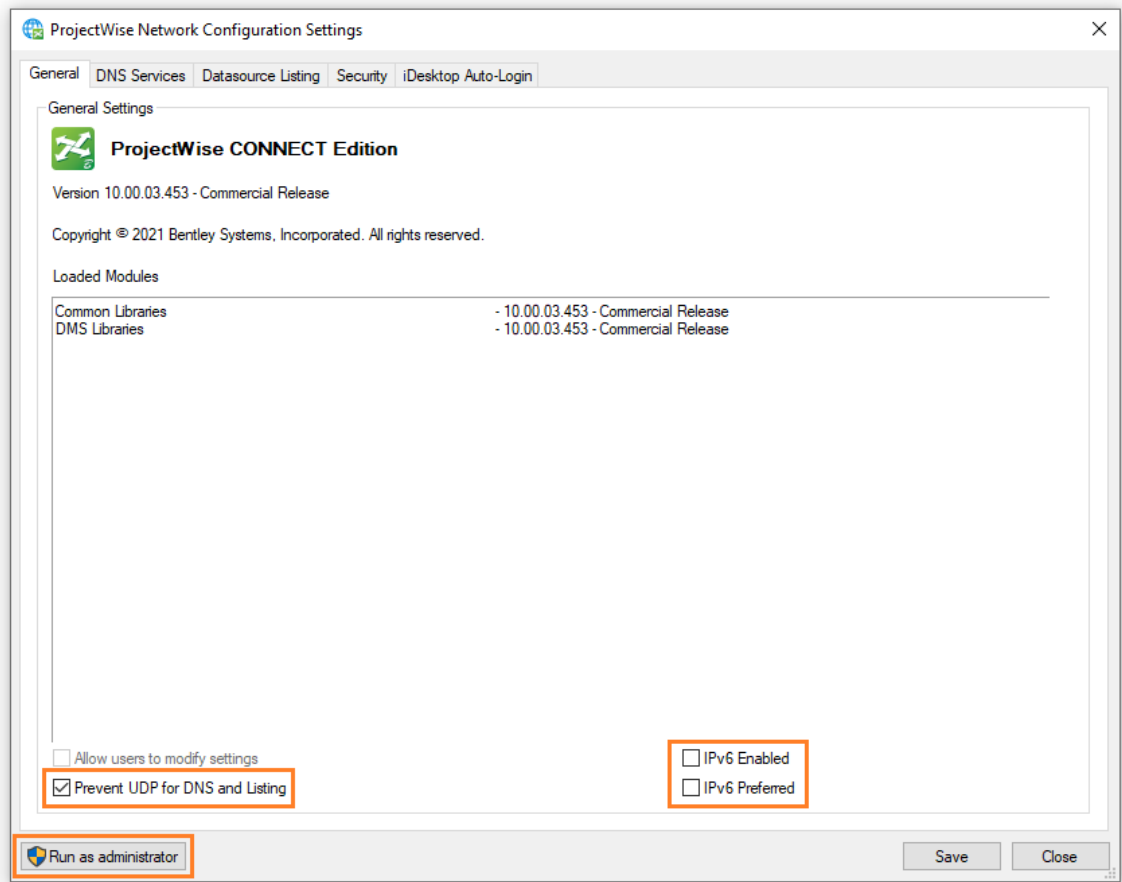
- Start ProjectWise Explorer
- Select Tools from the pulldown menu.



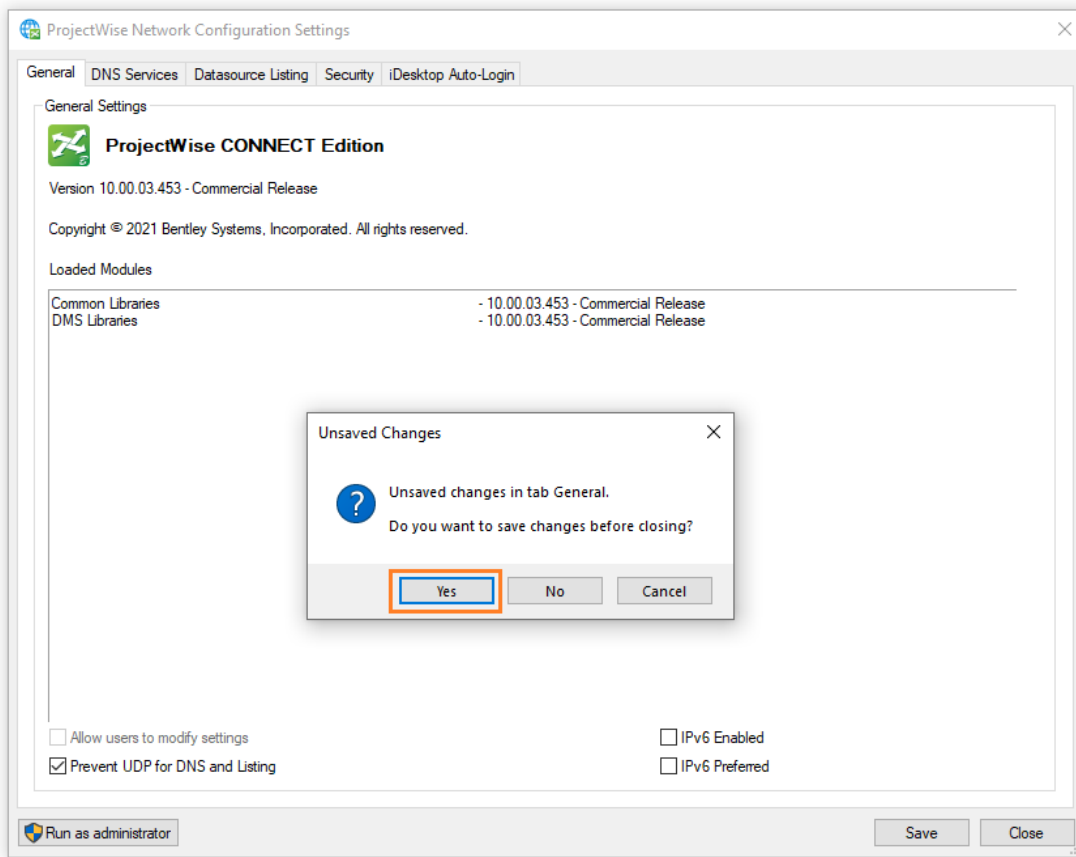
- Select Network Configuration Settings



- Clear both IPV6 Settings
- Enable Prevent UDP settings.
- Select Run As Administrator. If you are unable to proceed due to workstation restrictions, your local IT personnel may be able to assist you.

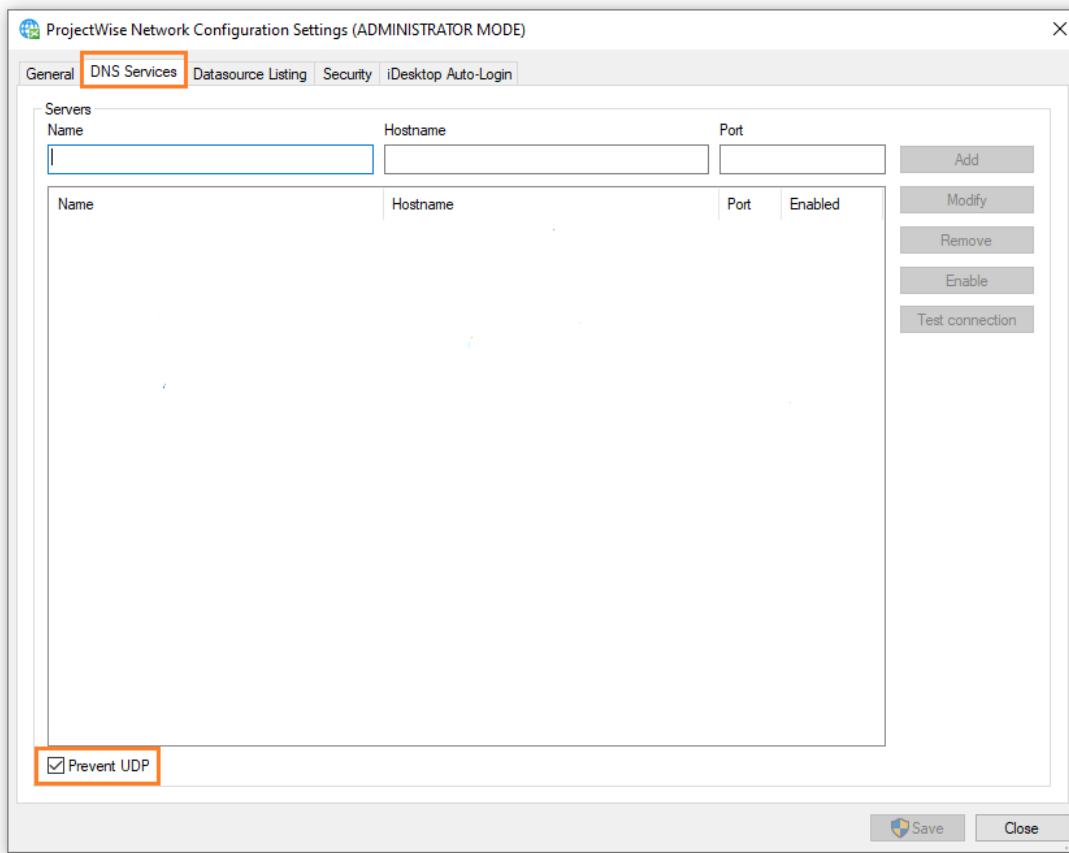


- Select Yes if prompted to save your changes.



- Select DNS Services tab. Ensure that the Prevent UDP is enabled.





- Add the following values in the DNS Service tab to access Jacobs' **On Premise** datasources.

**Note: The following configurations connect to projects within Jacobs' infrastructure.**

### **Americas region**

Name: Jacobs AMER  
Hostname: ProjectWiseGatewayAMER.jacobs.com  
Port: 5800  
Datasource listing [here](#)

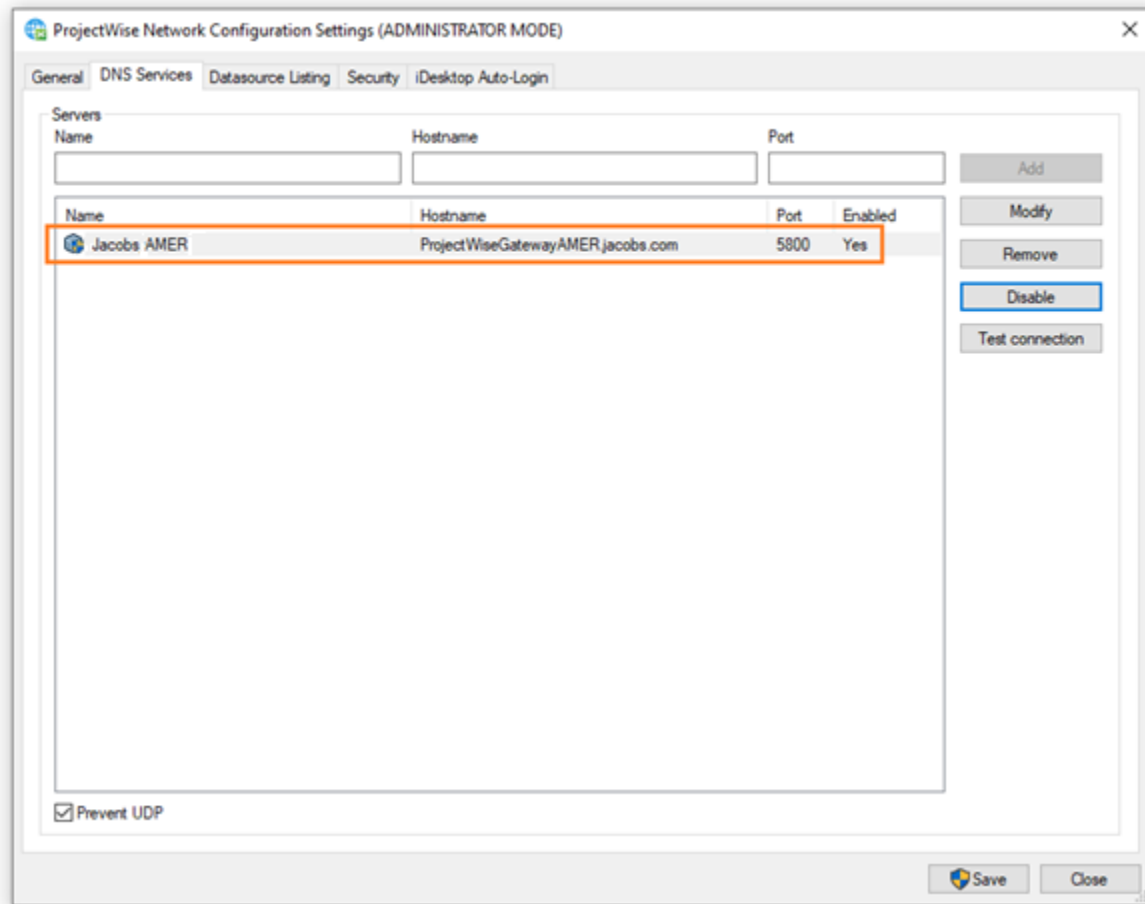
### **EU region**

Name: Jacobs EU  
Hostname: ProjectWiseGatewayEMEA.jacobs.com  
Port: 5800  
Datasource listing [here](#)

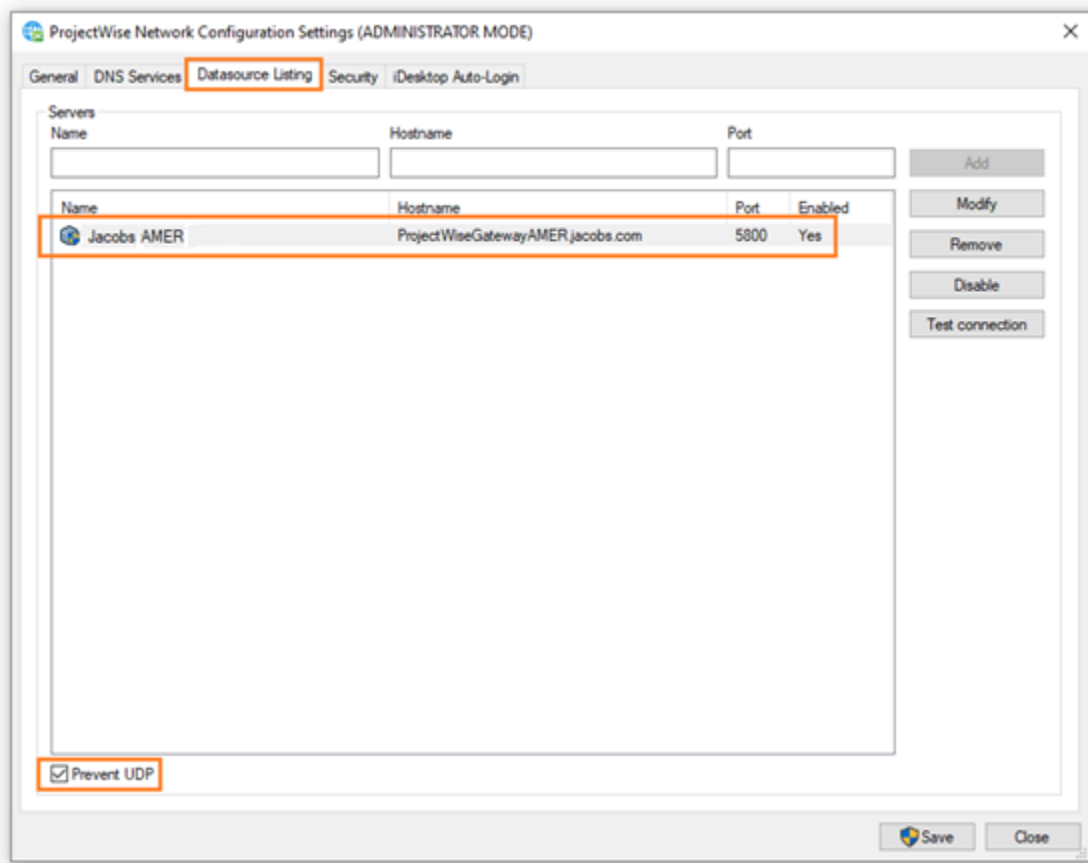
### **APME region**

Name: Jacobs APME  
Hostname: ProjectWiseGatewayAPAC.jacobs.com  
Port: 5800  
Datasource listing [here](#)

For example: Americas



- Match the same values for the Datasource Listing tab. Ensure Prevent UDP is enabled.



- Select **SAVE**

- For access to Jacobs Bentley hosted datasources, use the following values ONLY on the Datasource Listing tab.

**Note: The following configurations connect to projects that are Bentley Cloud hosted.**

**Americas region**

Name: Jacobs AMER Cloud  
Hostname: jacobs-us-va-pw.bentley.com  
Port: 5800  
Datasource listing [here](#)

**UK region**

Name: Jacobs UK Cloud  
Hostname: jacobs-uk-ldn-pw.bentley.com  
Port: 5800  
Datasource listing [here](#)

**EU region**

Name: Jacobs EU Cloud  
Hostname: jacobs-eu-ir-pw.bentley.com  
Port: 5800  
Datasource listing [here](#)

**APME region - Australia**

Name: Jacobs Australia Cloud  
Hostname: jacobs-au-nsw-pw.bentley.com  
Port: 5800  
Datasource listing [here](#)

**APME region - Singapore**

Name: Jacobs Singapore Cloud  
Hostname: jacobs-sing-pw.bentley.com  
Port: 5800  
Datasource listing [here](#)

**APME region - India**

Name: Jacobs India Cloud  
Hostname: jacobs-india-pw.bentley.com  
Port: 5800  
Datasource listing [here](#)

**APME region - Middle East**

Name: Jacobs Middle East Cloud  
Hostname: jacobs-me-pw.bentley.com  
Port: 5800  
Datasource listing [here](#)

## **Americas On Premise**

ARE  
CH2MHILL\_IAT  
CH2MHILL\_TBG  
CH2MHILL\_WBG  
DEN001  
GBNA  
Jacobs AMER Federal-500  
Jacobs AMER Military Aviation-500  
Jacobs\_Americas  
Jacobs\_Civil\_2004  
Jacobs\_DEN003  
Jacobs\_JLPatterson  
Jacobs\_Telecommunications\_SS4  
Jacobs\_US\_B\_I\_SS4  
Jacobs\_US\_Restricted\_SS4  
NAI  
Program\_Intel  
Project\_NEWPP

## **Americas Bentley Hosted**

Jacobs Americas (Cloud)  
Jacobs AMER LifeSciences-001  
Jacobs AMER Transport-001  
Jacobs AMER Specialized Mfr-001  
Jacobs AMER Water-001  
Jacobs AMER MetroLinx-001  
Jacobs AMER Electronics-001  
Jacobs Global Specifications and Details  
Jacobs AMER Program Intel-001  
Jacobs AMER HRPSS-001  
Jacobs AMER HCTRA-001

## **EU On Premise**

.LON001  
.LON002  
.MDT001  
CH2M\_LON\_PRG\_UKTEAM2100  
CH2M\_MDT\_002  
CH2MHILL\_Highways\_England  
Jacobs-zaf-Prod  
Jacobs EMEA  
Jacobs UK CMS-500  
Jacobs\_UK\_ATEN\_V10  
Jacobs\_UK\_B&I\_2017  
Jacobs\_UK\_Buildings\_SS4  
Jacobs\_UK\_Highways\_SS4  
Jacobs\_UK\_Power\_&\_Energy\_SS4  
Jacobs\_UK\_Rail\_SS4  
Jacobs\_UK\_Sandbox\_SS4  
Jacobs\_UK\_Water\_&\_Utilities\_SS4  
Jacobs\_UK\_WE\_EnvAgency  
Metrolink  
Project\_Trafikverket  
Project\_Varsha

## **EU Bentley Hosted**

Jacobs EU Transport-001

## **APME On Premise**

Costco Wholesale Projects  
Darwin Projects  
Goulburn Murray Water (GMW) Projects  
Goulburn Valley Water Projects  
Jacobs ANZ IE  
Jacobs ANZ RP  
Jacobs Asia  
JAJV WestConnex Stage 3A  
KiwiRail Projects  
Melbourne Airport Projects  
QLD Main Roads Projects  
AusNet Services Projects  
Sydney Water Projects  
VMFRP  
Yarra Valley Water Projects

## **UK Bentley Hosted**

JacobsPartnership  
Jacobs EMEA Transport-001  
HS2DDP  
Jacobs UK CMS USNC  
Jacobs UK SDF-001  
Jacobs EU Transport-001

## **APME - Australia Bentley Hosted**

Jacobs APME Federal-001  
Jacobs APME Water [Yarra Valley]-001  
Jacobs APME Data Capture-001  
Jacobs APME Transport-001  
Jacobs APME Transport [John Holland]-001  
Jacobs APME Transport [Development]-001  
Jacobs APME Resources-001  
Jacobs APME Water-001  
Jacobs APME Power-001

## **APME - Singapore Bentley Hosted**

Jacobs APME PUB-001  
Jacobs SGP LifeScience-001  
Jacobs APME Asia-001

## **APME - India Bentley Hosted**

Jacobs India LifeSciences-001  
Jacobs India Specialized Mfr-001  
Jacobs India Restricted

## **APME - Middle East Bentley Hosted**

Jacobs-me-Prod  
Jacobs ME Integrated-001